

## Re-coloring paper/elements in Microsoft Digital Image Suite

Written by Angie Christianson. If you have any questions please contact me at

[help@digi-scrap.com](mailto:help@digi-scrap.com)

This tutorial attempts to show you how to change the color of various papers/elements in Microsoft Digital Image Suite.

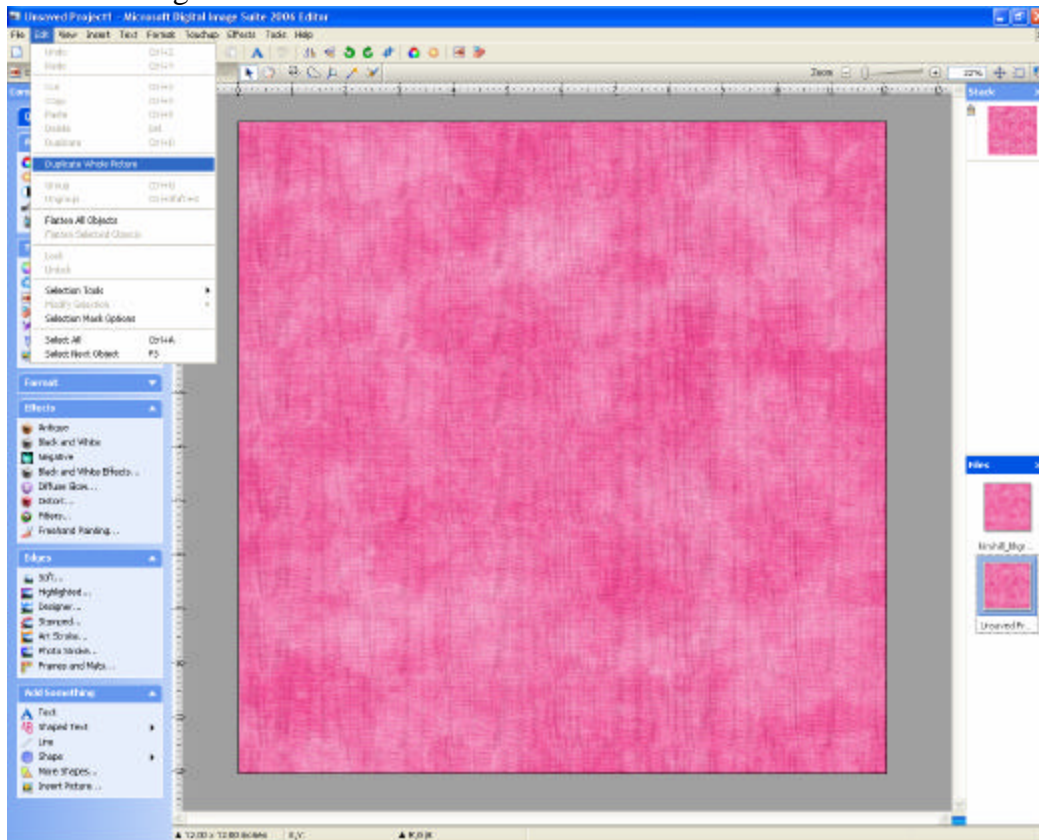
I have broken it down as follows:

- Basic color change of monochromatic paper/element
- Color change of a paper/element to match a particular color
- Color change of a certain design on a paper/element (i.e. stripes, dots)
- Making these changes with-in your actual layout

### Basic color change of a monochromatic paper/element

1) In DIP, open the file of the paper/element you wish to recolor.

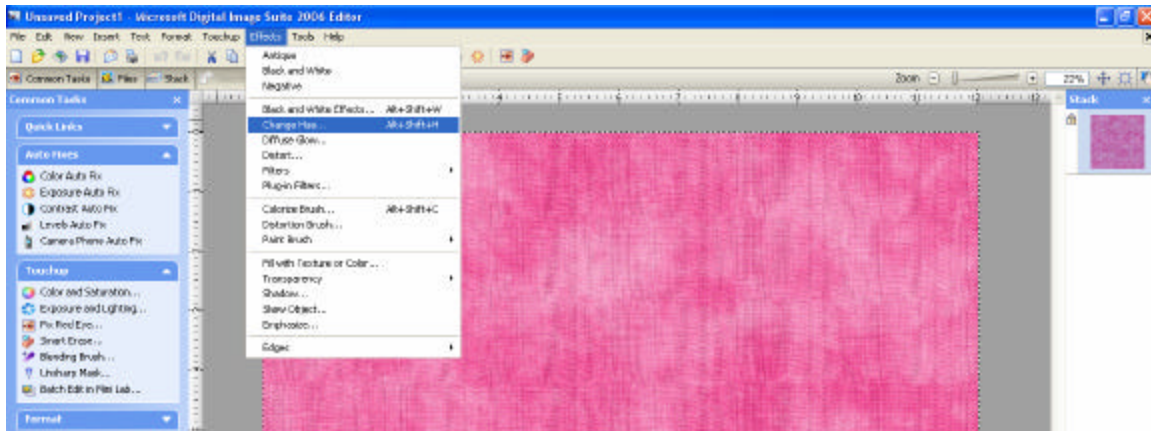
On the task bar go to EDIT>DUPLICATE WHOLE PICTURE



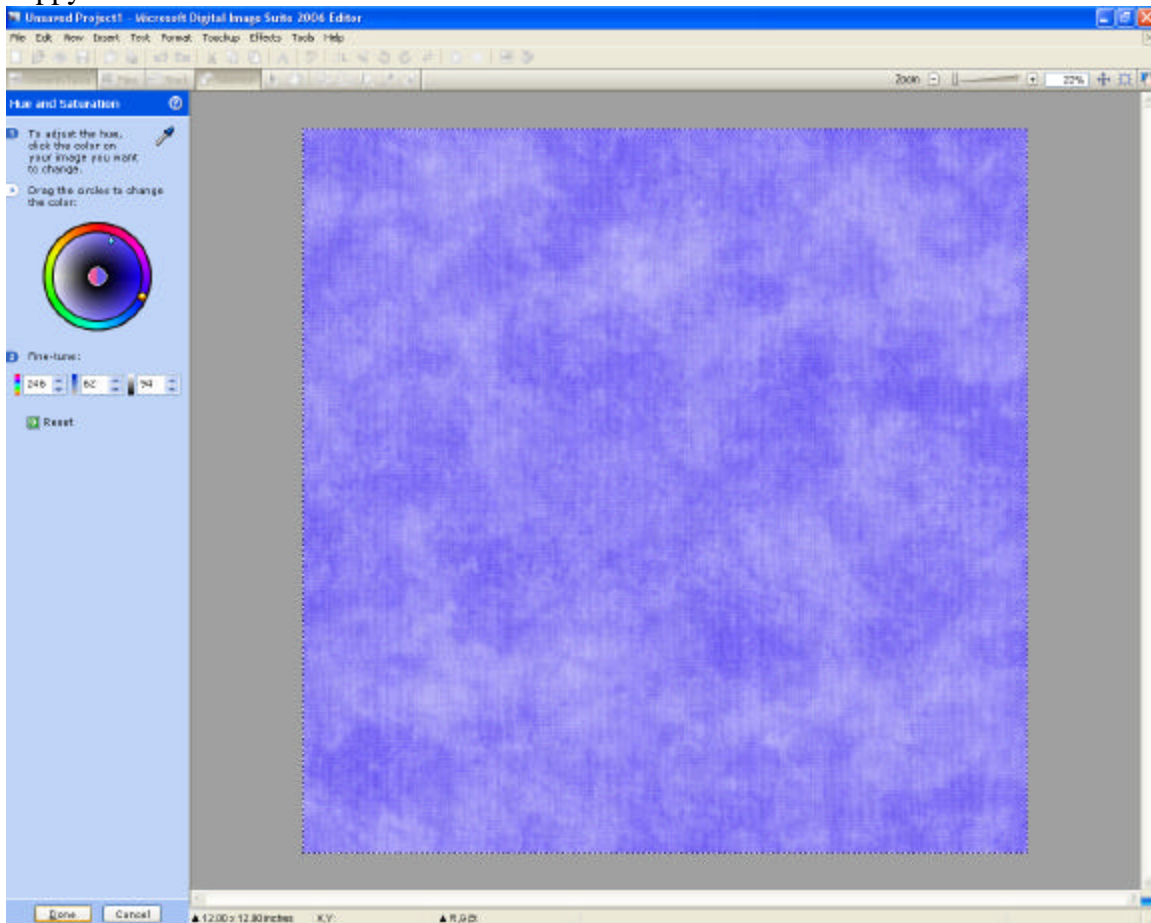
You now have two copies of the paper open in your Files palette.

Close the original by clicking the left mouse button over the original file in the files palette and choosing “close”.

2) Now, with your paper highlighted in your stack, choose EFFECTS> CHANGE HUE on the task bar.



When you move the mouse pointer over the paper it becomes an eyedropper. Use this to pick the color you wish to change by clicking on that spot on the paper. Next, use the circles on the color wheel to change the hue and/or saturation of the paper. To keep the saturation and brightness of the original only play with the yellow circle. Or you can enter numeric values in the “Fine-tune” boxes. Click “Done” when you are happy with the new color.

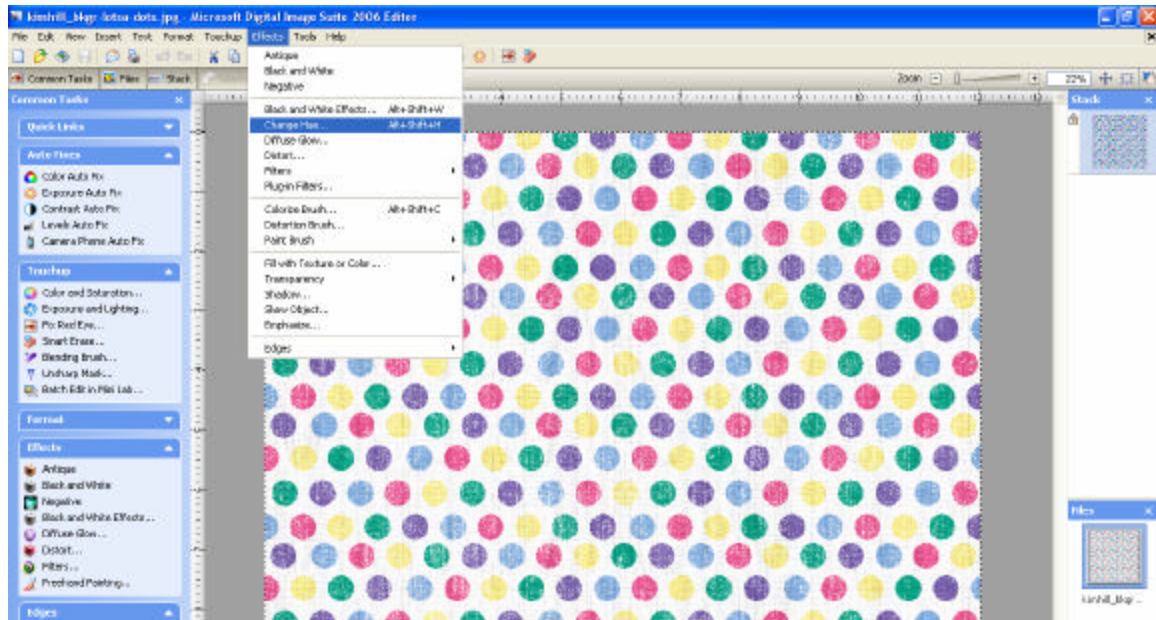


You did it. Now you can either save this new creation (be sure to give it a different name than the original!) or just drag and drop it onto your layout.

## Color change of a paper/element to match a particular color

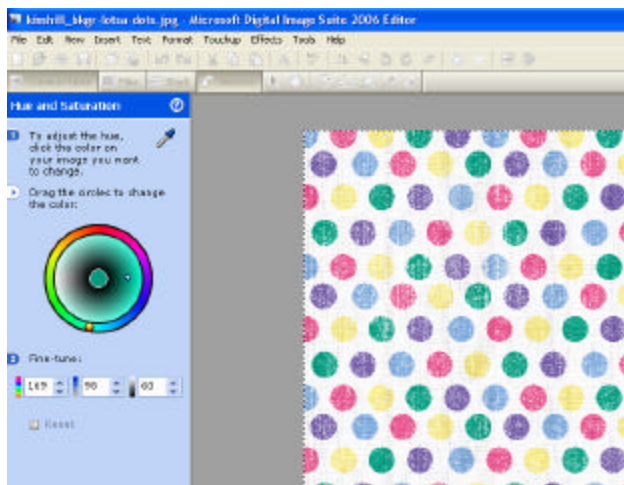
1) Open the file for the paper/photo that contains the color you wish to match.

Now, with this paper/photo highlighted in your stack, choose EFFECTS> CHANGE HUE on the task bar.



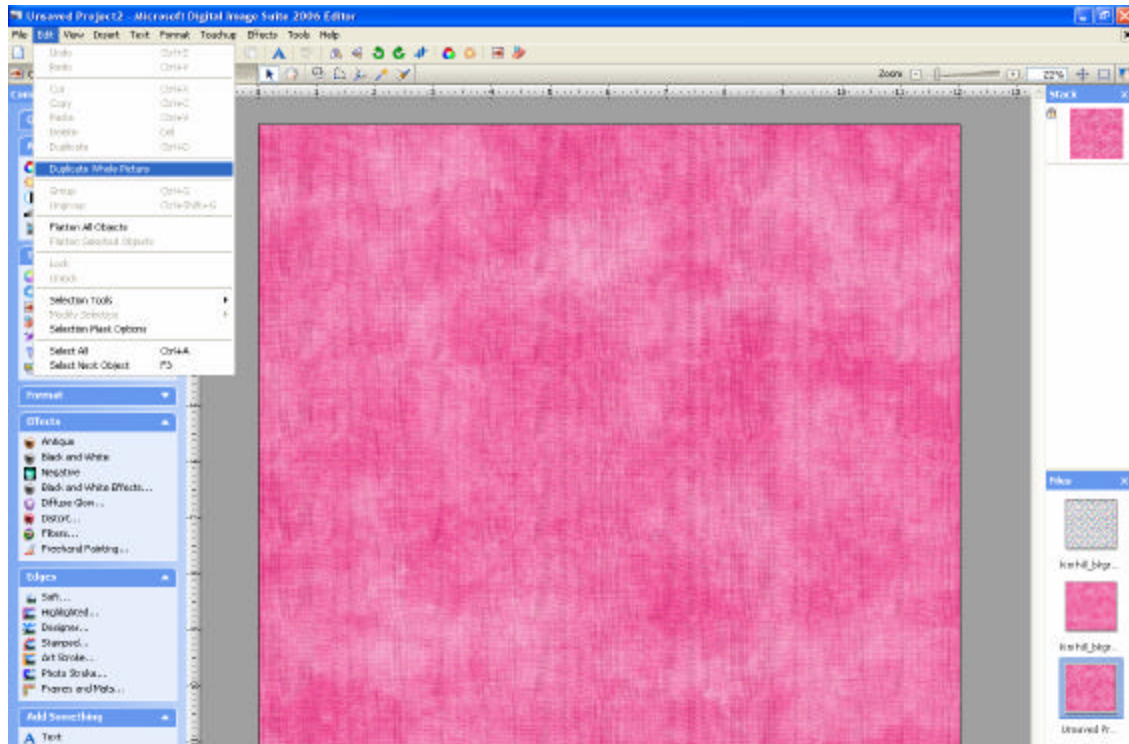
When you move the mouse pointer over the paper it becomes an eyedropper. Use this to pick the color you wish to match by clicking on that spot on the paper. I chose a green dot to copy the color.

This should change the numbers in the “Fine-tune” boxes. Make note of these numeric values (write them down...you will forget!) as you will need to use those in the next step.



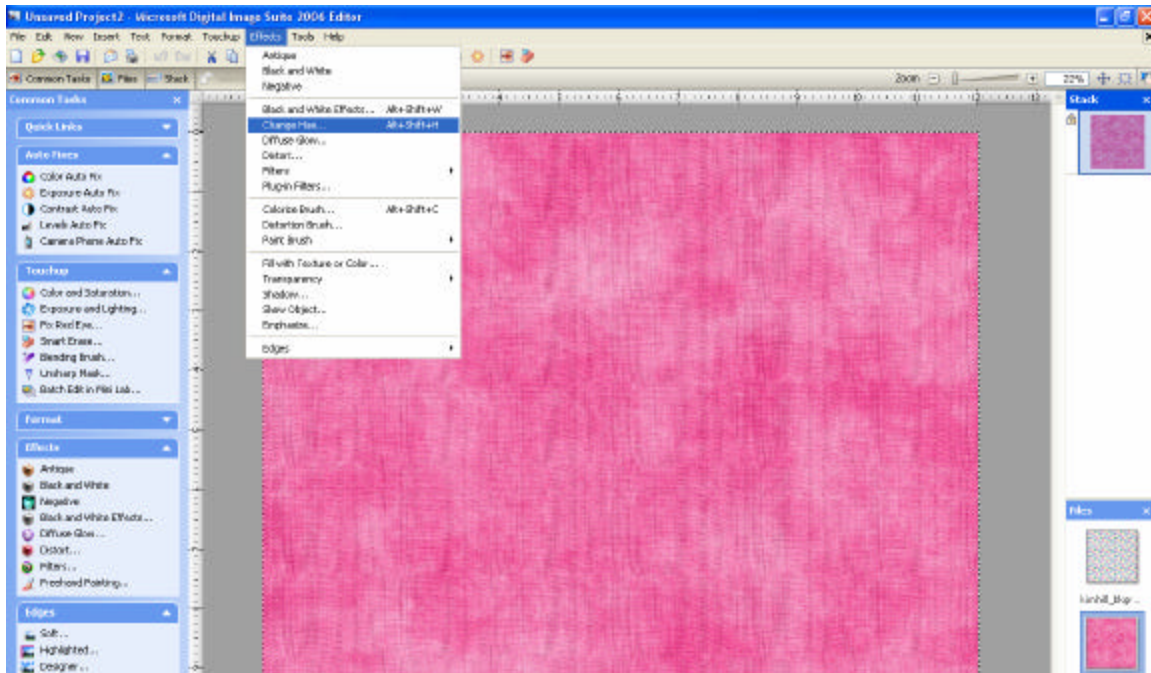
Click the cancel button at the bottom and then close this file as you are through with it.

2) Next, open the file for the paper you wish to recolor.  
On the task bar go to EDIT>DUPLICATE WHOLE PICTURE

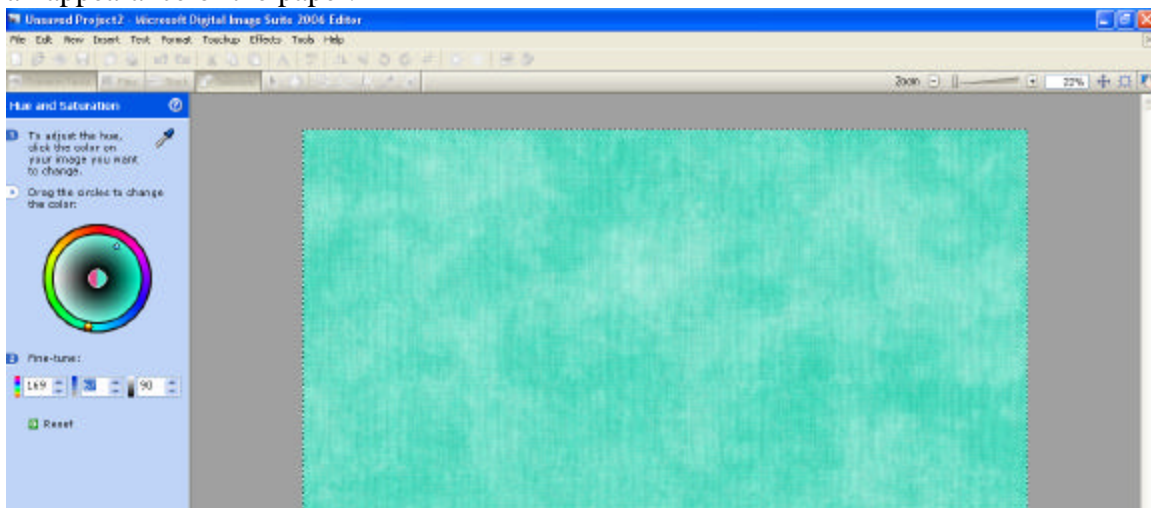


You now have two copies of the paper open in your Files palette.  
Close the original by clicking the left mouse button over the original file in the files palette and choosing “close”.

3) With this paper highlighted in your stack, choose EFFECTS> CHANGE HUE on the task bar.



When you move the mouse pointer over the paper it becomes an eyedropper. Use this to pick the color you wish to change by clicking on that spot on the paper. In the boxes under “Fine-tune”, type in the number values you have from the other paper. You should now see your new paper. Often times it is best to only change the value for “hue” as I did here, as changing the other values by much can significantly alter the overall appearance of the paper.

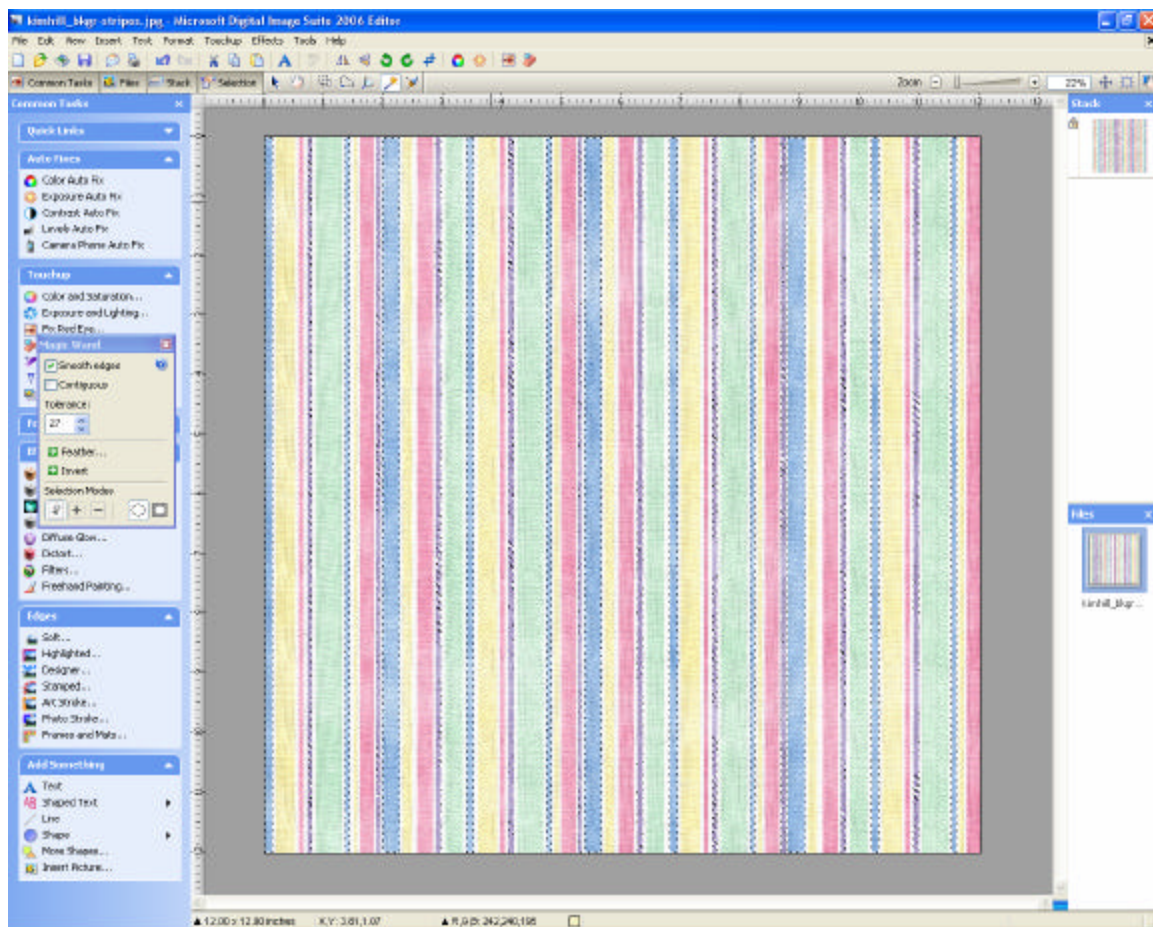


If it is like you want then click the done button. If you are not happy with the changes then fiddle with the values by either using the circles on the wheel or by changing the numeric values under fine-tune.

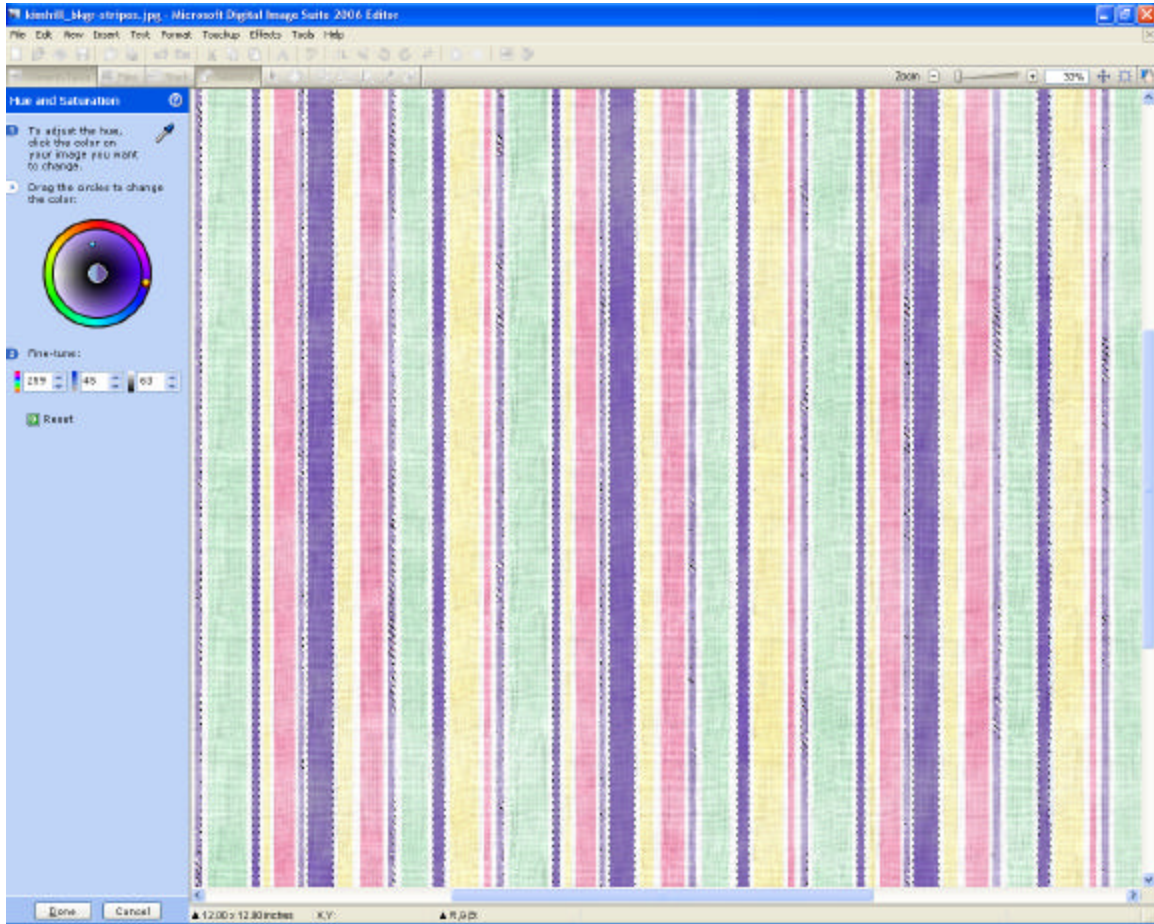
You did it. Now you can either save this new creation (be sure to give it a different name than the original!) or just drag and drop it onto your layout.

## Color change of a certain design on a paper/element (i.e. stripes, dots)

- 1) Once again, you need to know the numeric values for the Hue, Saturation and Brightness of the color you are wishing to copy. So, open the file that contains this color. Go to EFFECTS>CHANGE HUE and use the eyedropper to pick the color you want to match. Make note of the values in the “Fine-tune” boxes. Close this file. (See previous descriptions for screen shots of these steps.)
- 2) Now, open the file you want to alter. Use the magic wand to highlight the portion of the paper you want to change. Here I am changing the blue stripes to purple. Be sure you have “Contiguous” checked if you want to change all the blue to purple. You may need to adjust the “Tolerance” of the magic wand (see small palette box to the left of paper) to include the various shades of blue.



- 3) Once you have the stripe highlighted, go to EFFECTS>CHANGE HUE and use the eyedropper to pick the blue and then enter the numeric values from the other color in the boxes under “Fine-tune”.



You can fiddle with the values until you are happy with what you see then click done.

You are finished.

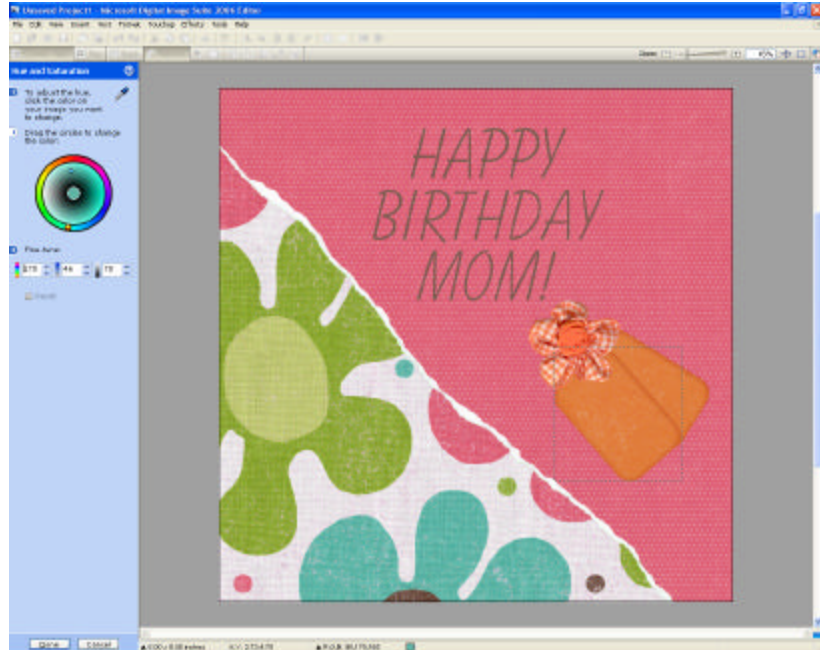
To get rid of the marching ants click on the object tool (The little arrow in the white box on the tool bar).

Once again you can save this (give it a new name) or just drag and drop onto your layout.

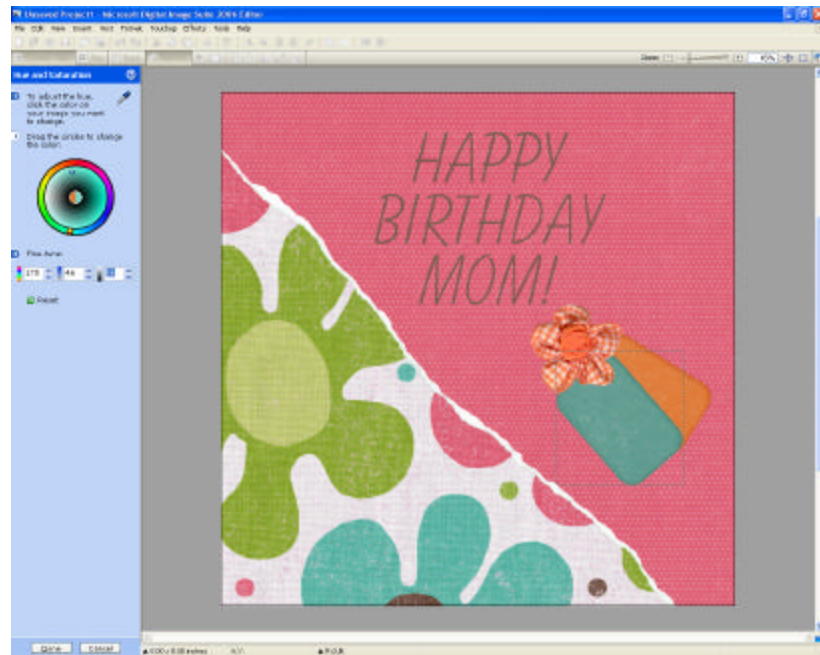
## Making these changes with in your actual layout.

I actually prefer to make my changes while working on the actual layout canvas itself. Say I have my various papers and such all in place, but I want to change colors of one of the elements. Here I want one of the orange tags to be blue.

- Highlight that tag in the stack.
- Go to EFFECTS>CHANGE HUE. You should now see your entire layout in the Hue and Saturation work space. Use the eye dropper tool to pick the color you want to copy. Here I put it on the blue flower. Make note of the numeric values of this color you see in the “Fine-tune” boxes



- Next place the eyedropper on the orange tag you want to change.
- Now, in the “fine tune” boxes type in the numeric values of the blue color. This should change the orange to blue. Fiddle with it until you are pleased and the click done.



You did it! Having everything on the canvas to pick and choose from makes this a lot easier I think!