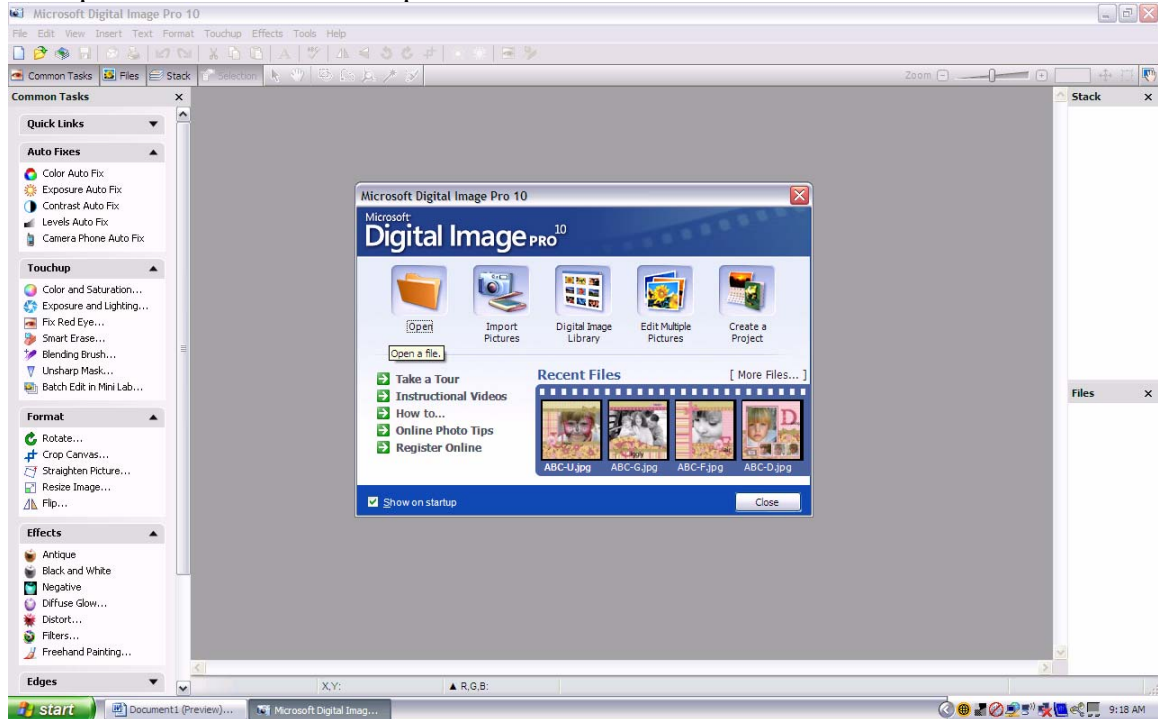


# PINCHING A RIBBON IN DIP 9 OR 10

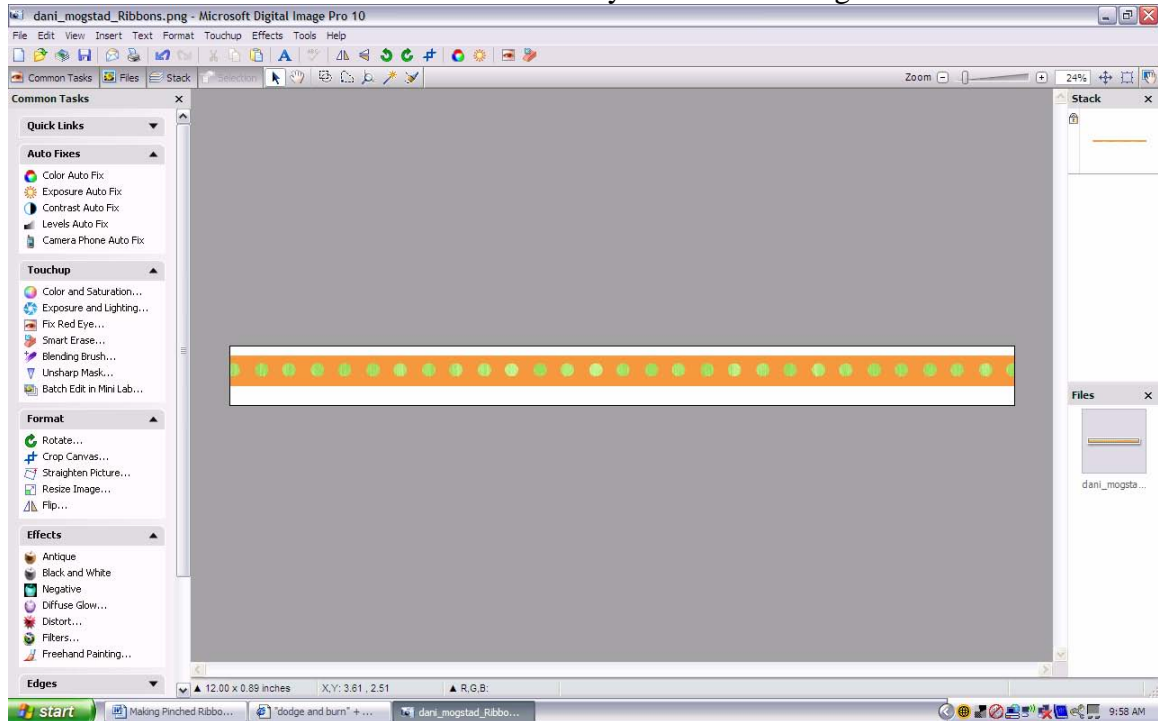
By Saxon Holt

If you have any questions about this tutorial, please contact me at [kevinsaxon@cox.net](mailto:kevinsaxon@cox.net)

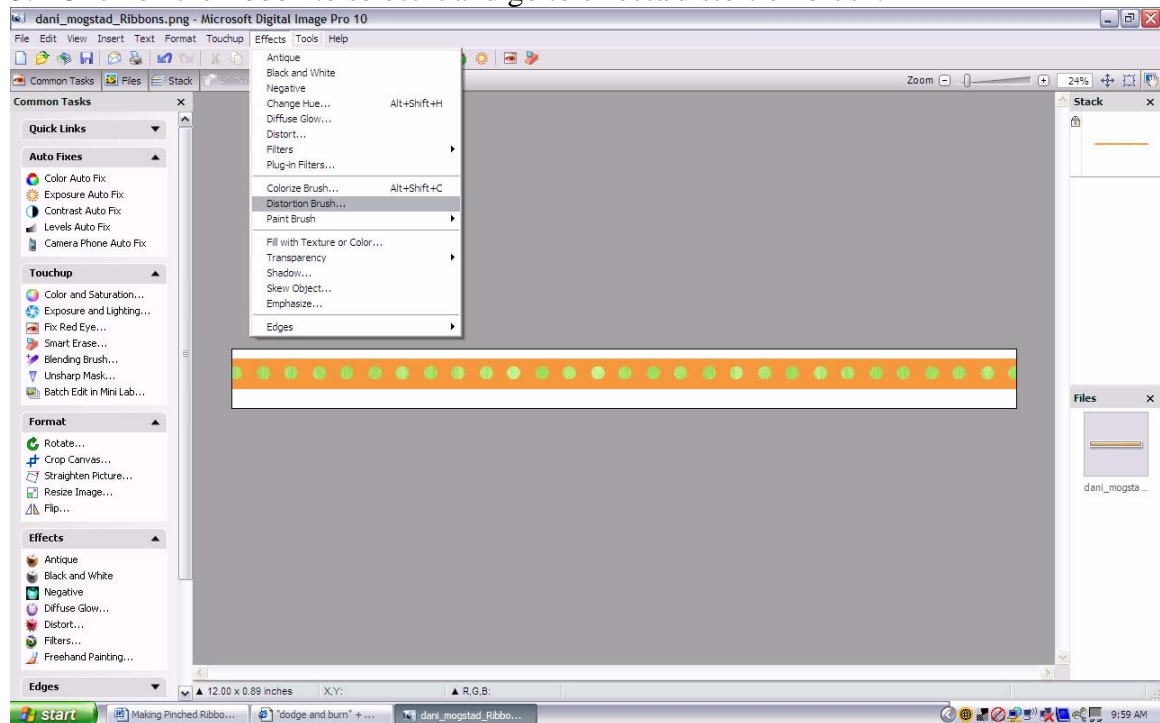
## 1. Open DIP and select File/open



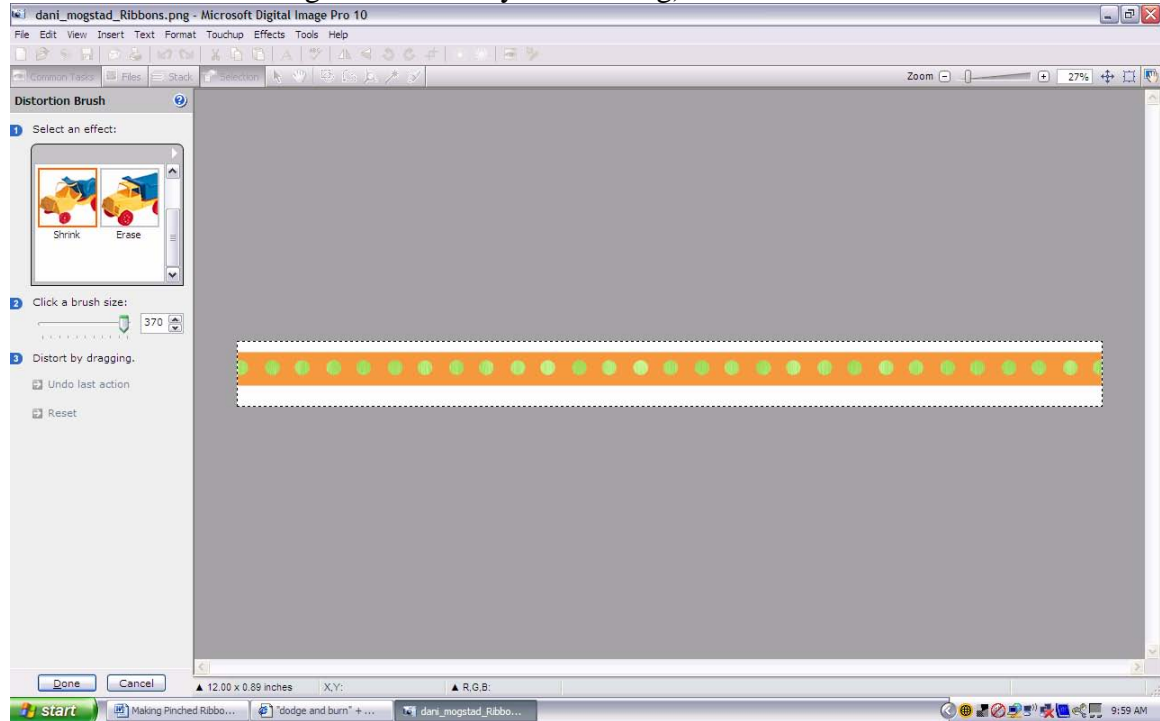
## 2. Open the ribbon you would like to use. It will be placed in your files menu on the left side of the screen as well as in front of you in the working area.



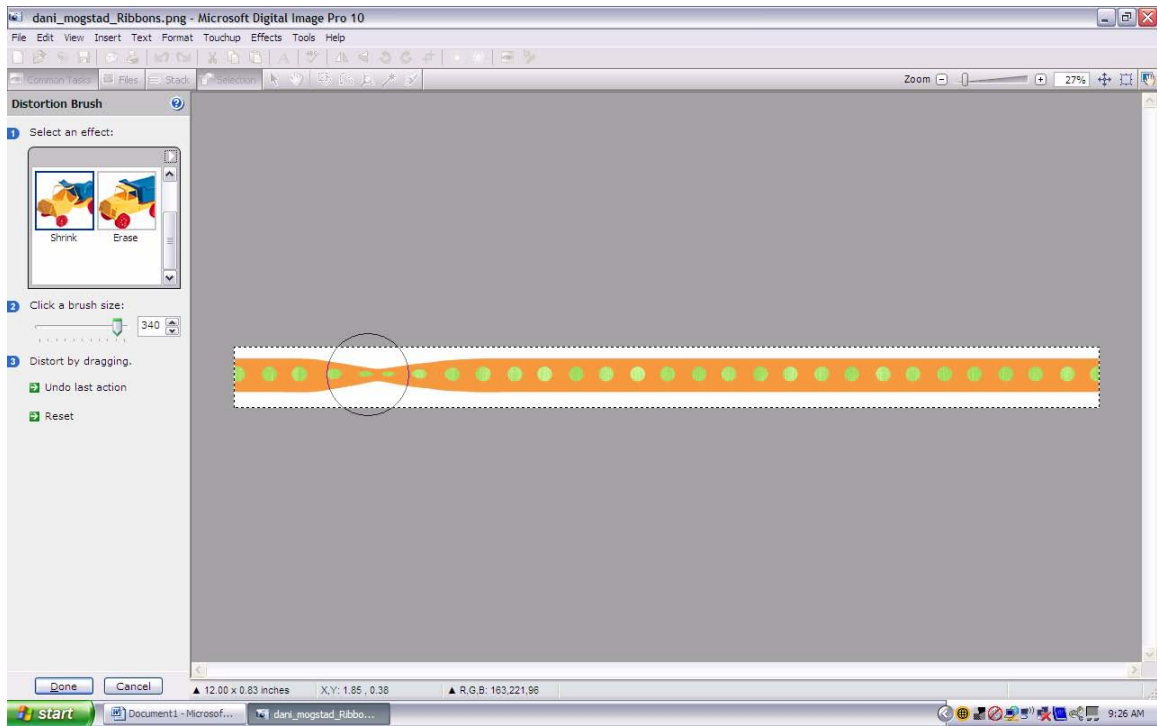
3. Click on the ribbon to select it and go to effects/distortion brush.



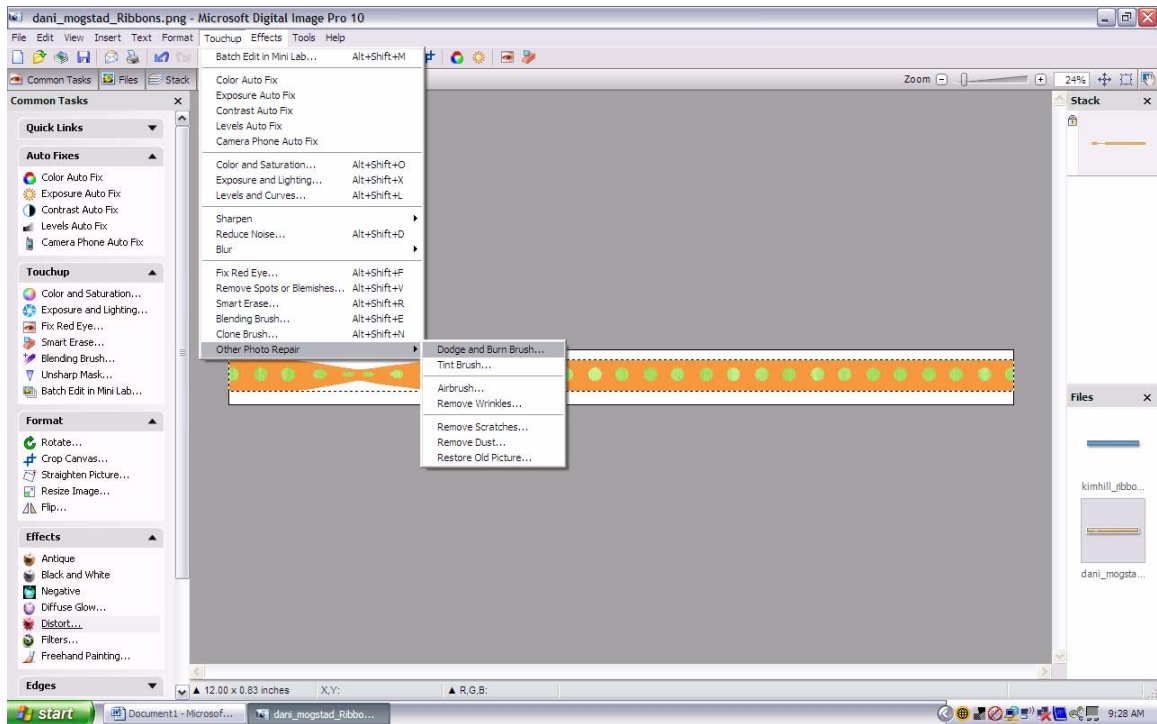
4. Choose the SHRINK option, and select a brush size of 370 or so. (Adjust the brush size according to the ribbon you are using)



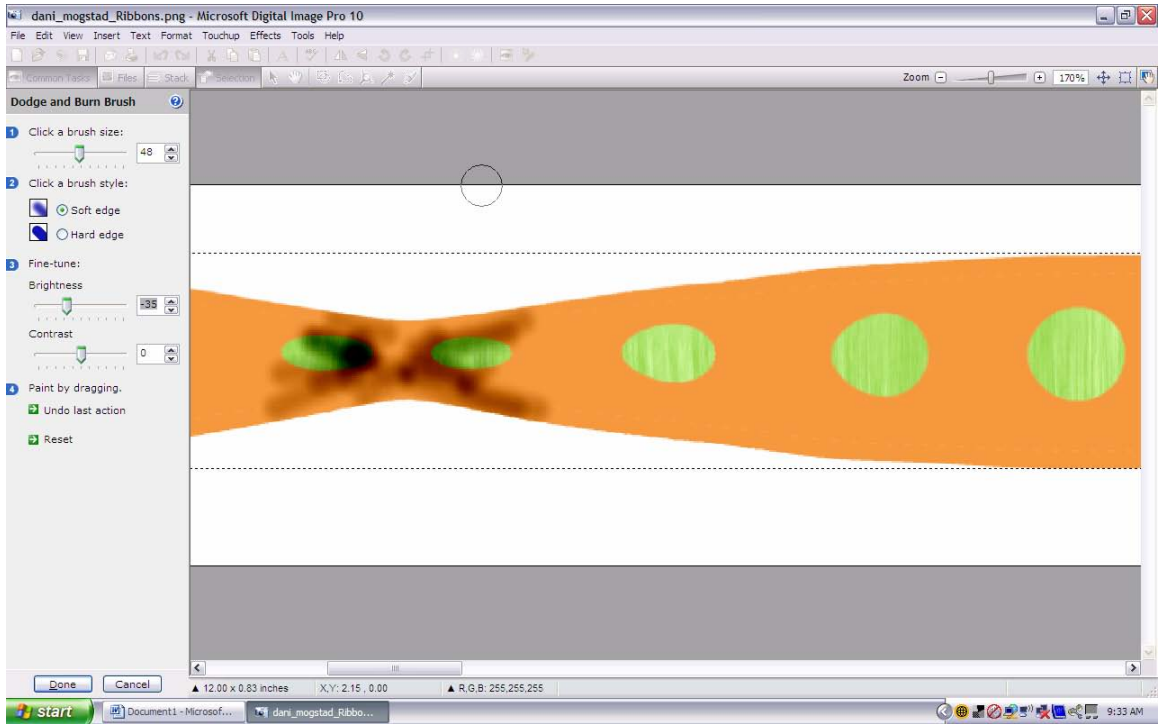
5. Slowly drag the brush over the area of ribbon you would like pinched. (You may have to do this several times to get the desired effect)



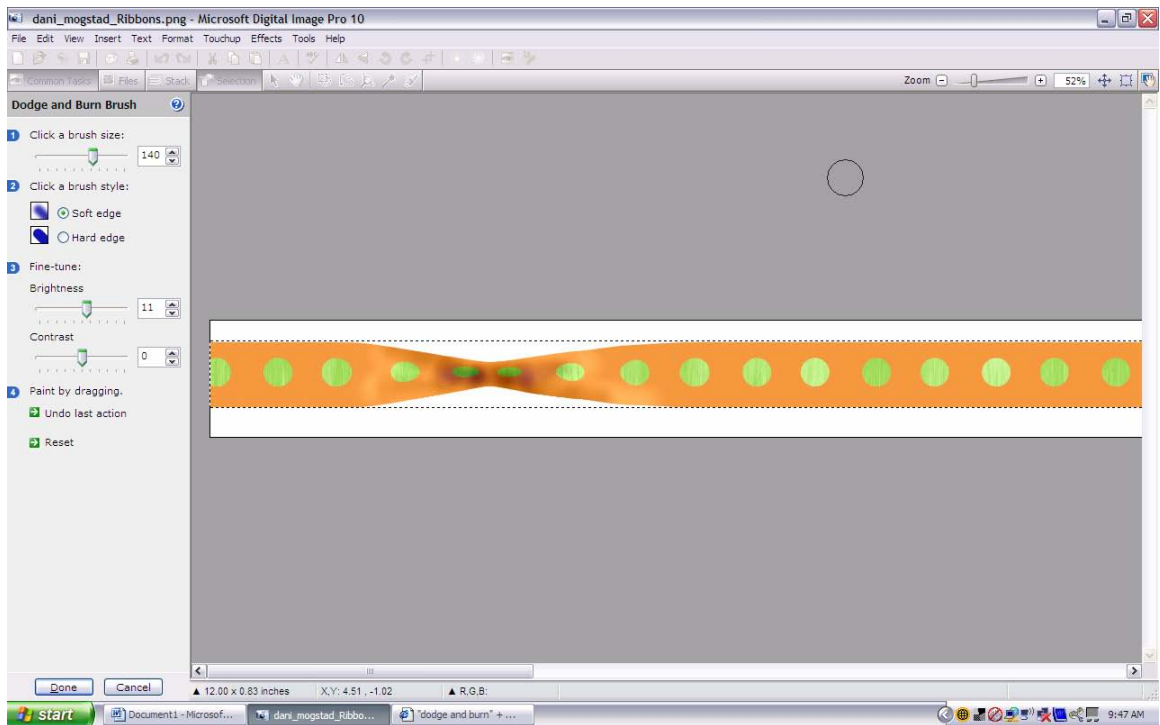
6. At this point, your ribbon will look a little warped and should have a nice pinch in it. Remember, you can always use the reset or Undo last action option if you accidentally pinch it too much!
7. Now, click on DONE and return to your main screen.
8. Select the ribbon again, and go to Touchup/Other Photo Repair/Dodge and Burn



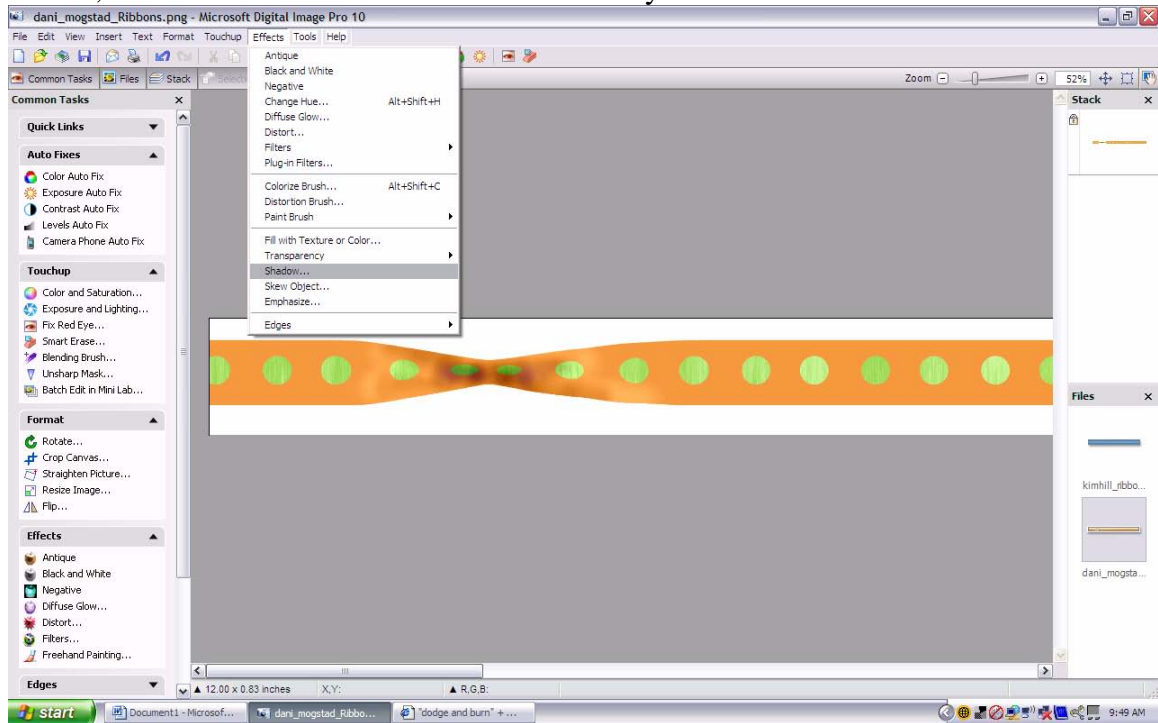
9. Blow up your image to about 150% so that you can really see the detail, and select a brush size of about 140 (play with this size depending on the ribbon you are pinching)
10. Adjust the brightness to about -30 or so, and slowly brush over the ribbon in the places it would naturally be darker if it was pinched (this takes practice, so remember to use the undo last action and reset buttons if you need!) It doesn't look like much at this point, but don't worry!



11. Now, adjust the brightness to 11 and go back over the ribbon and lighten those areas that seemed too dark or would naturally have highlights in them. Click DONE.

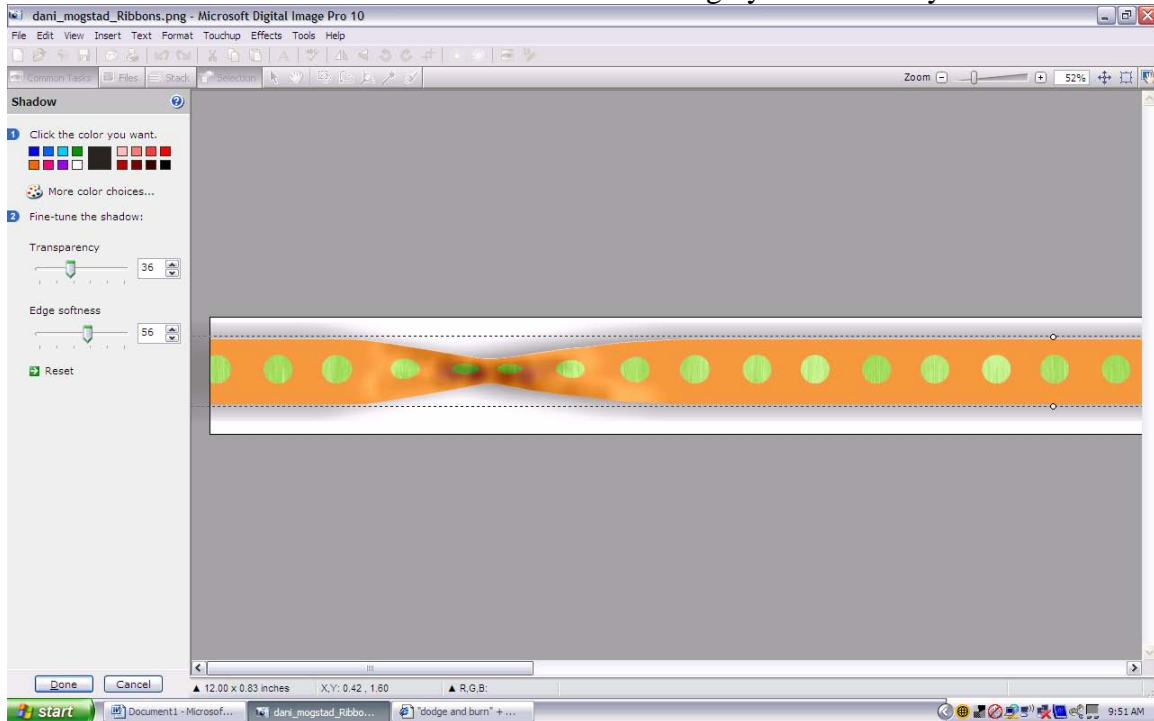


12. Ok, now it's time to add a realistic shadow to your ribbon. Go to effects/shadow



13. Select soft, and click on Customize the shadow.

14. Select a transparency of 36 and an edge softness of 56. (Play with these a lot depending on the ribbon and the paper you are using) You can also select a different color to make the shadow if the basic grey doesn't suit you. Click DONE



15. Now, add your embellishment to the ribbon and you are finished!

