

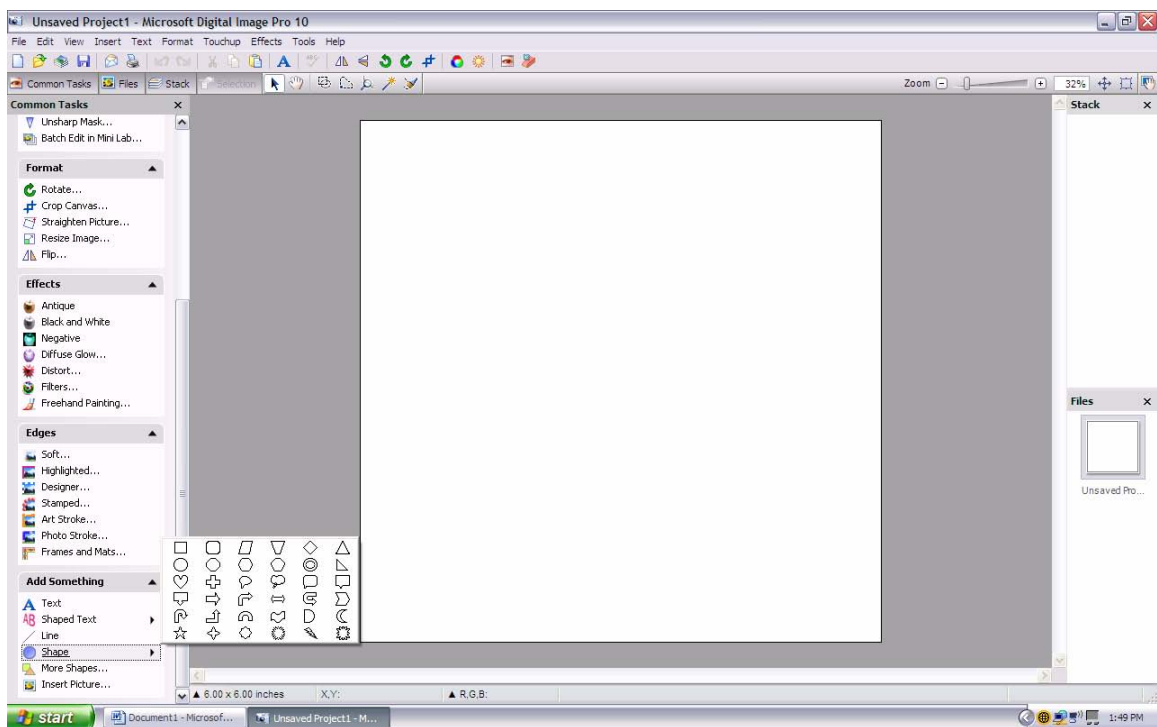
USING PRESET SHAPES IN DIP 9 OR DIP 10

By Saxon Holt

If you have any questions about this tutorial, please feel free to contact me at kevinsaxon@cox.net

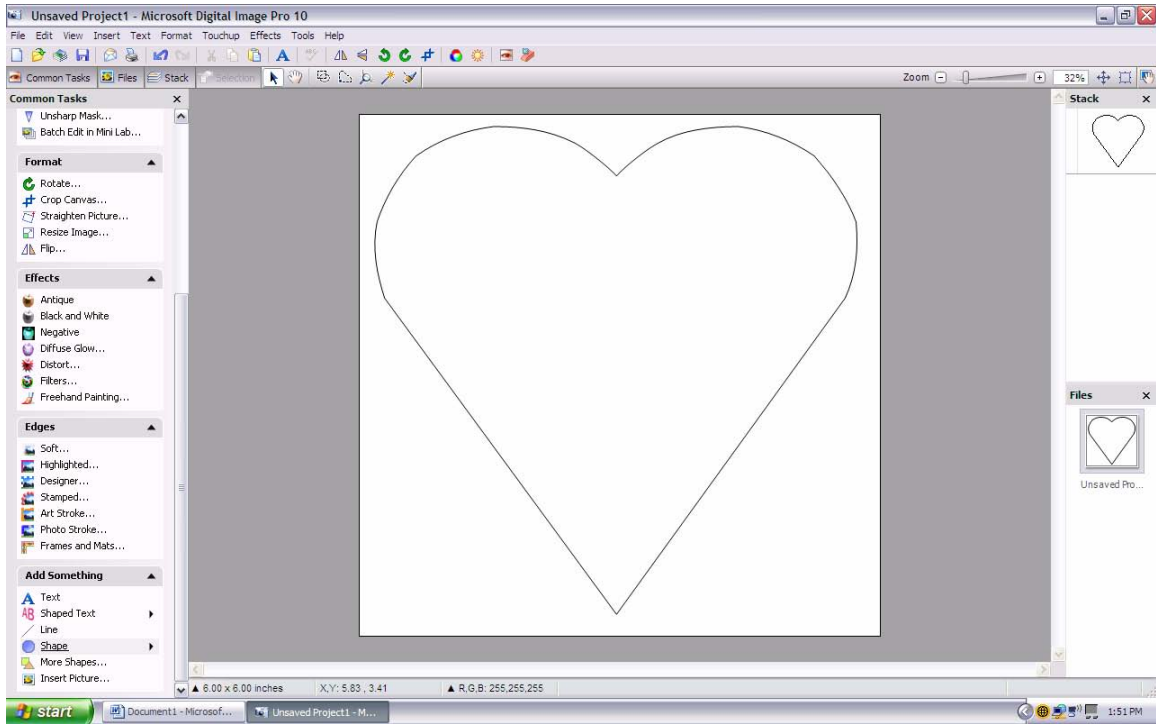
Open up DIP and select a new canvas size. I am using a 6x6 for the example, but any size will do.

Go to Add Something / Shape

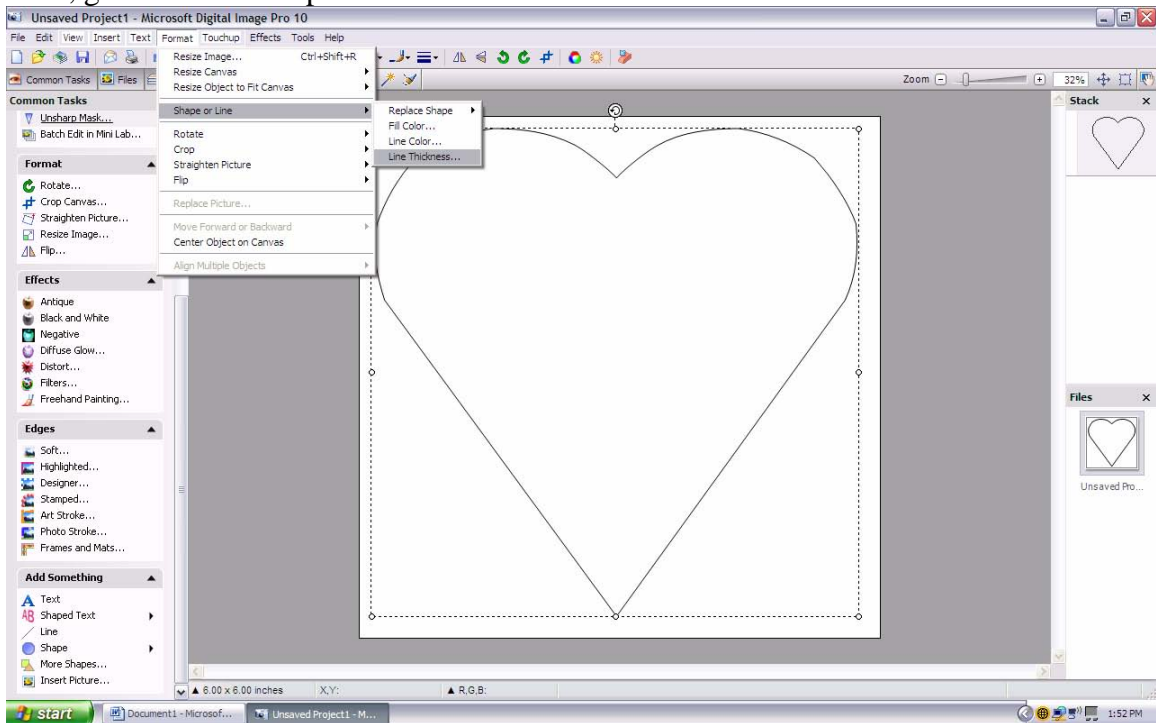


Select a shape you want to work with (alternately, you can insert your disk and see many other shapes) For the example, I'll use the heart shape.

Drag and resize the shape to the size you like. I prefer to fill the canvas so I can see what I'm doing better!

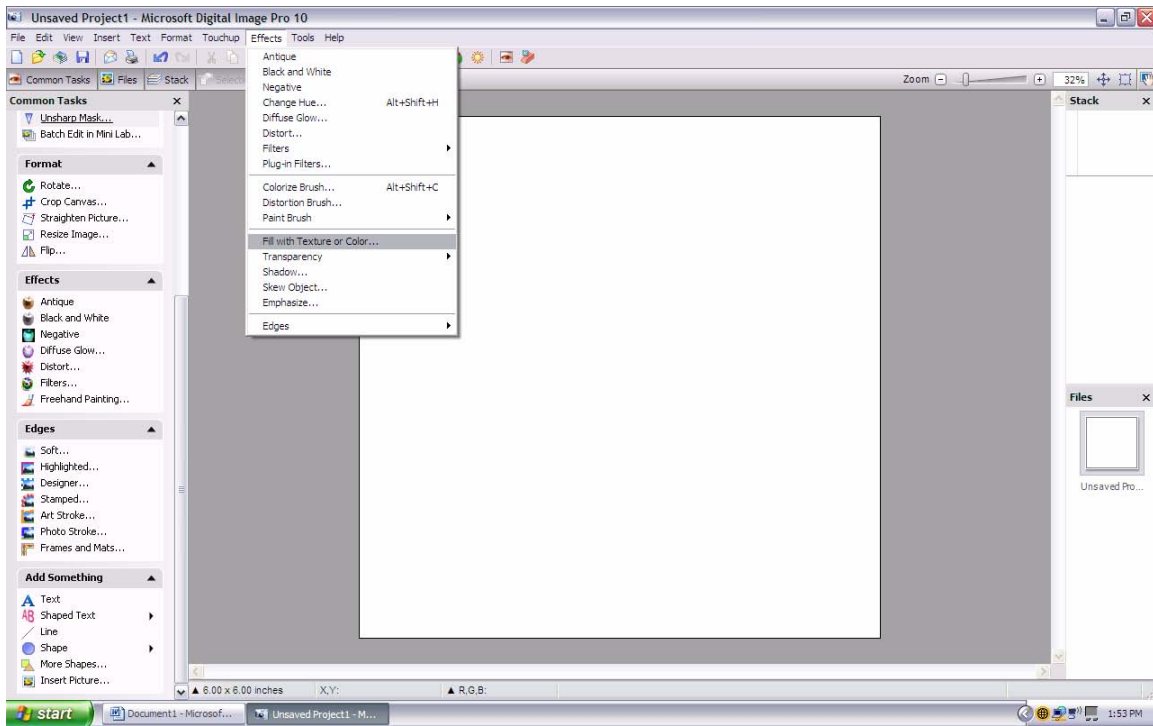


Now, go to Format/Shape or Line/Line thickness



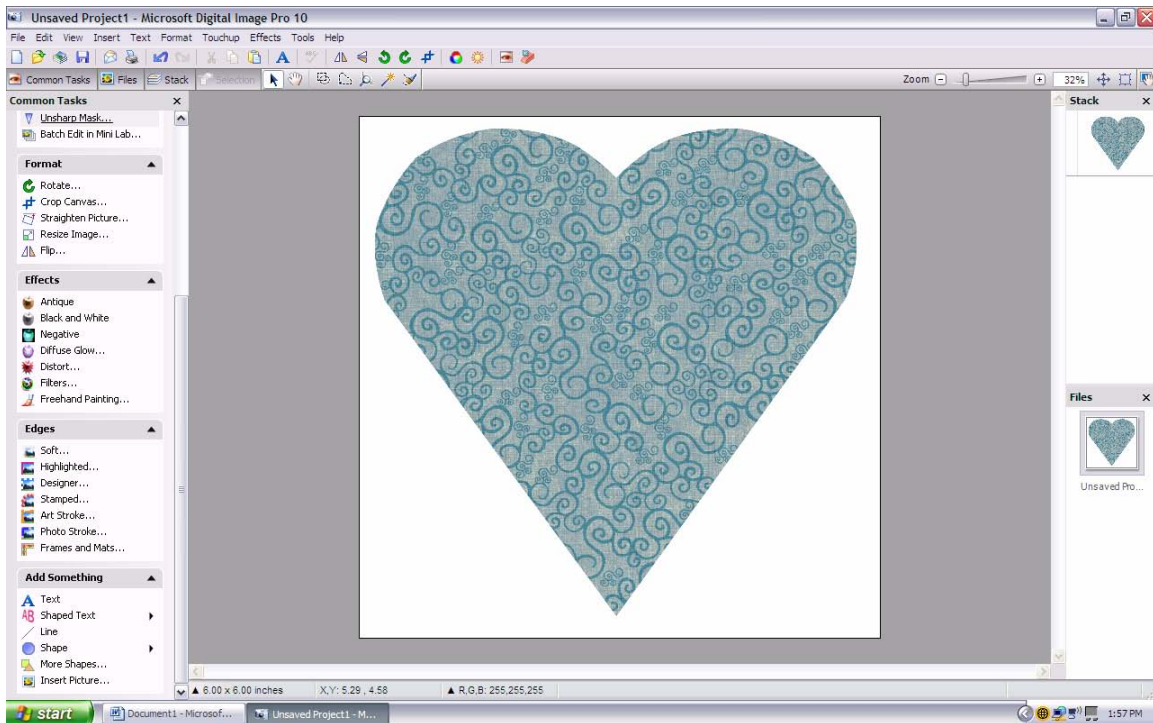
Select the option for NONE. Now, your object will look as if it has disappeared, but it hasn't.

Go to Effects/Fill with Texture or Color

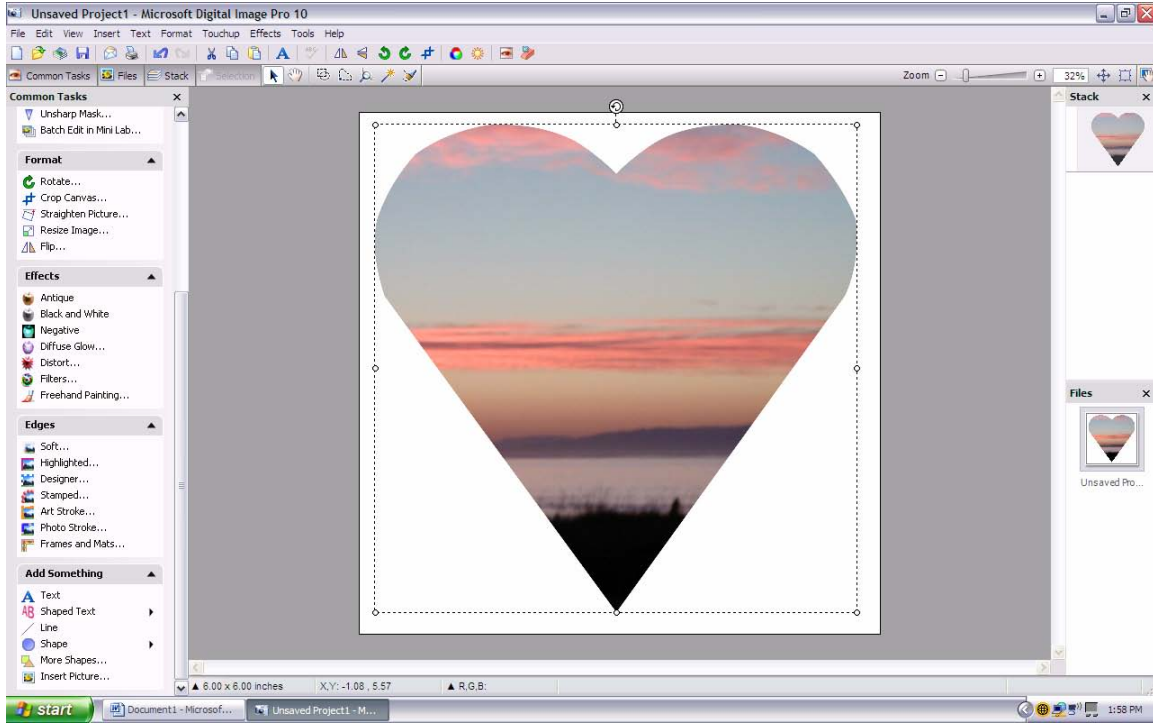


Chose Picture/ then open a picture. Now, browse your files and decide what you'd like to fill the shape with (either a photo or paper) and select it. Click DONE when you've finished. I will show you both options below.

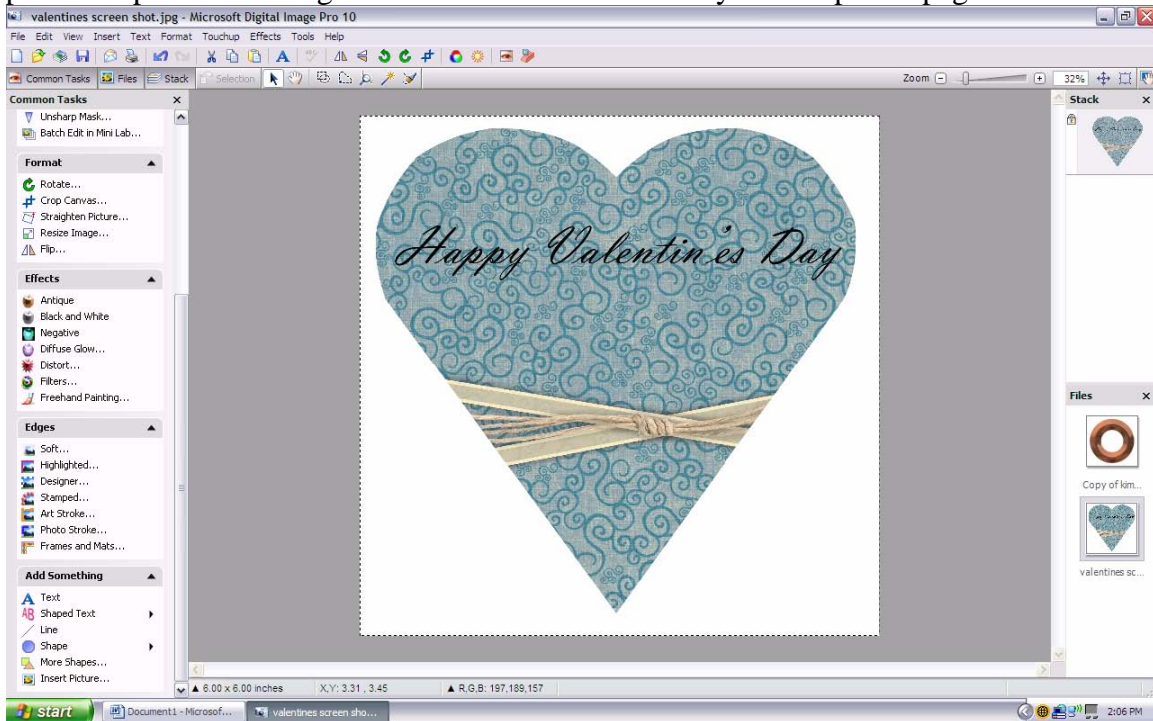
This is what the heart looks like filled with a patterned paper:



This is what the heart looks like filled with a photograph:



Now, you can add text, or any other embellishments that you'd like. Try using these preset shapes to make tags or other embellishments for your scrapbook pages.



The above is your completed heart.